



Aeon Metals Limited
(formerly Aussie Q Resources Limited)
ABN 91 121 964 725

Level 7, 88 Pitt Street, Sydney, NSW 2000, Australia
P.O. Box 8155, Gold Coast MC. Qld 9726, Australia
P: 61 7 5574 3830 F: 61 7 5574 3568
W: aeonmetals.com.au
E: info@aeonmetals.com.au
ASX Code : AQR

23 October 2014.

Company Announcements Office
Australian Securities Exchange
Level 4, Exchange Centre
20 Bridge Street
Sydney NSW 2000

High grade intercept - 15m @ 2.14% Cu and 0.15% Co Expands Significant High Grade Mineralisation Outside Current JORC Resource

Drill Results for WFPD185

The Board of Aeon Metals Limited is very pleased to announce further significant drill results from Hole WFPD185.

Hole WFPD185 is located 150m along strike to the east from recently announced Hole WFPD184 and shows very good geological continuity in the vicinity of the Lower Pyrite lens in the hanging wall zone adjacent to the regionally extensive Fish River fault.

This hole again ***confirms the previous robust geological modelling of the Walford Creek geology and mineralisation and the exciting exploration potential beneath the Indicated and Inferred JORC Resource*** which was previously restricted to 200m from surface.

These drill results therefore continue to strongly support the potential to increase the JORC Resource at Walford Creek and demonstrate the continuity of the previously identified "Exploration Potential" zones.

Hole WFPF185 significant intercepts include:

13m @ 0.87% Pb, 1.00% Zn, and 24g/t Ag from 229m

And 15m @ 2.14% Cu, 0.15% Co and 26g/t Ag from 242m

Figure 1: Plan showing the Walford 2014 Drilling Program

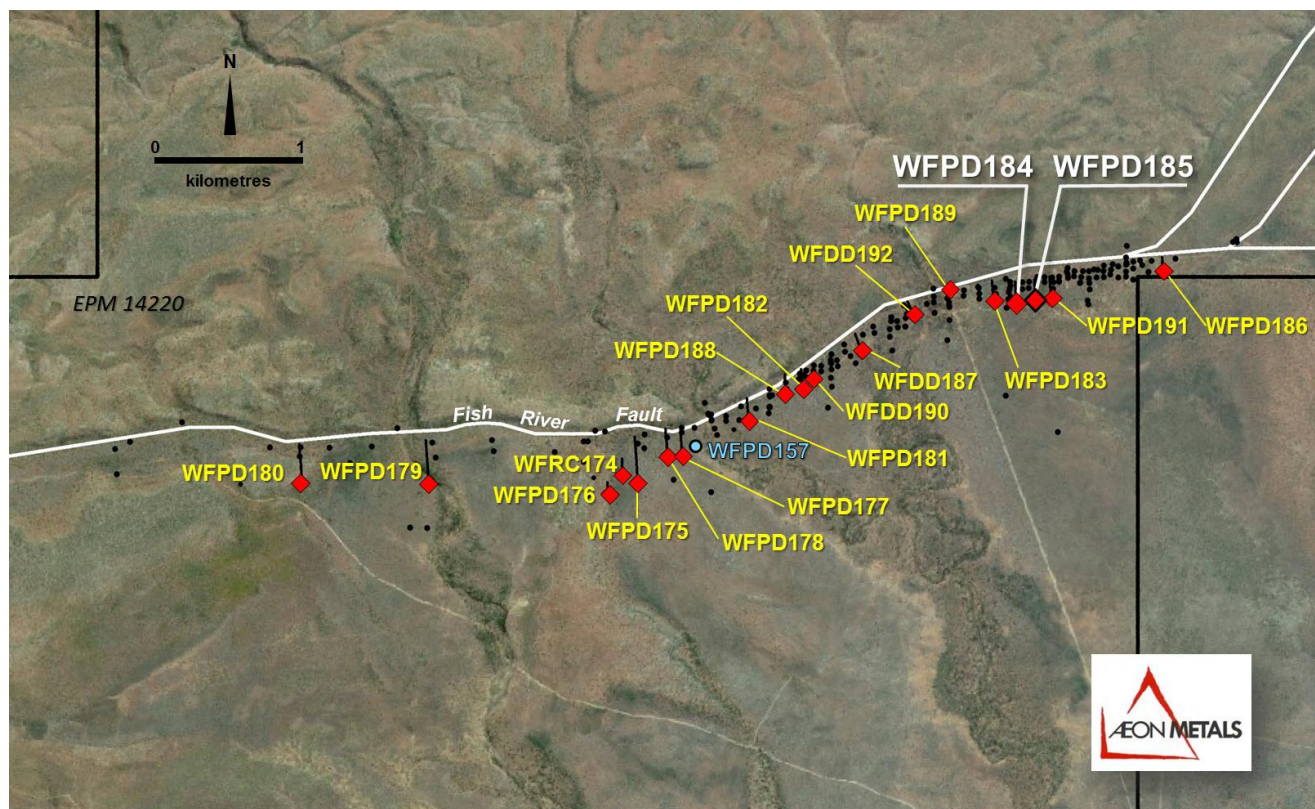


Figure 2: Walford Creek Long Sections including detail of Hole WFPD185 and the previous Hole WFPD184

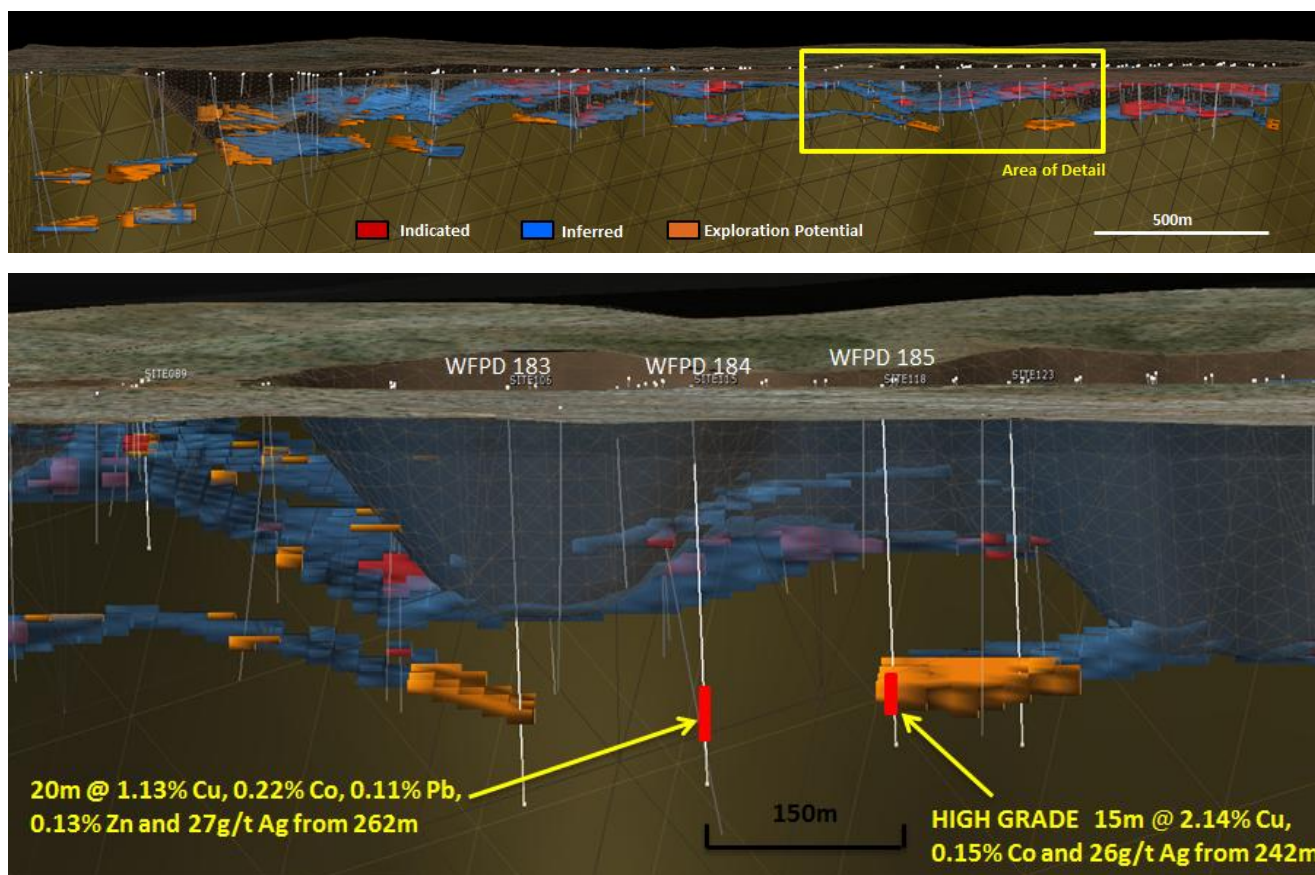
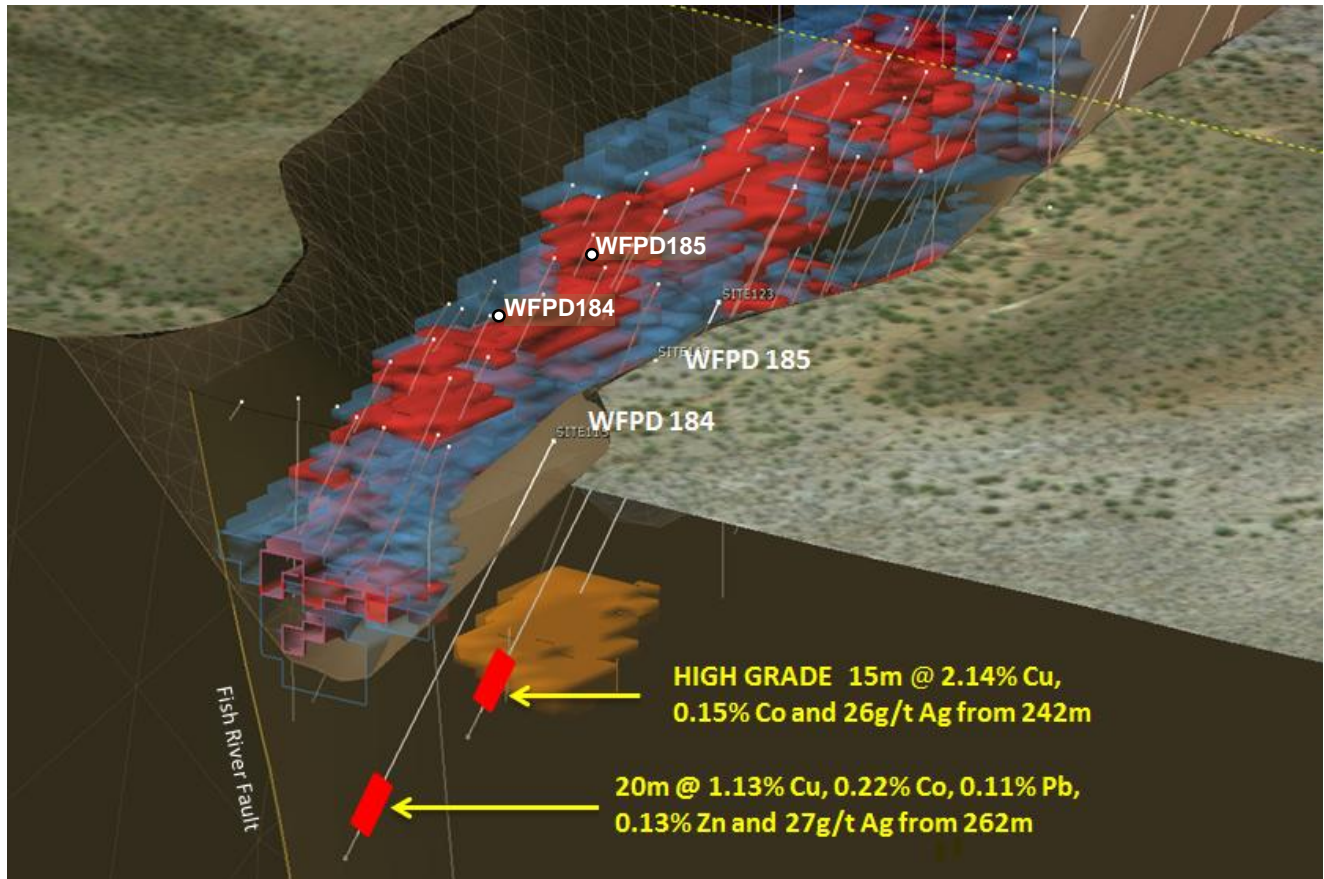


Figure 3: Walford Creek - oblique view with indicative pit walls and recent high grade intercepts in Holes WFPD184 and 185



Hole WFPD185 is part of the Company's 2014 drilling program at Walford Creek and the JORC Code Table 1 information published in the Company's announcement of 10 October 2014 applies to this hole.

Figure 4: WFPD185 core from 244m to 253.9m. Part of the high grade mineralisation intersected in Hole WFPD 185



For more information please contact:

Hamish Collins
Managing Director
 Aeon Metals Limited

info@aeonmetals.com.au
www.aeonmetals.com.au

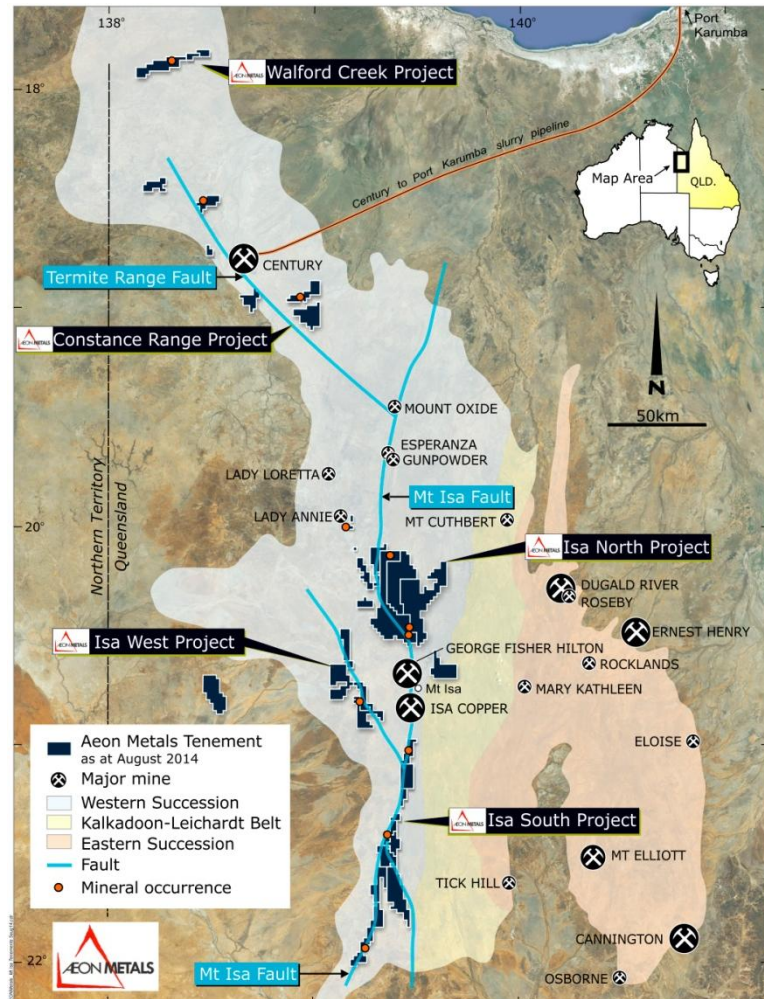


Figure 5: Aeon's Mt Isa Tenements

Competent Person Statement

The information in this report that relates to Exploration Targets and Exploration Results for the Walford Creek Deposit is based on information compiled Mr Dan Johnson who is a Member of the Australian Institute of Geoscientists and who has sufficient experience relevant to the style of mineralisation and type of deposit under consideration and to the activity which he is undertaking to qualify as a Competent Person as defined in the 2012 Edition of the Australasian Code for Reporting of Exploration Results, Mineral Resources and Ore Reserves (the "JORC Code"). Mr Dan Johnson is a full-time employee of Aeon Metals Limited and consents to the inclusion in the presentation of the Exploration Targets and Exploration Results in the form and context in which they appear.

Appendix: WFPD185 Significant Intercepts

Hole No.	Easting DGPS	Northing DGPS	Azimuth degrees	Dips degrees	Intersect M	Cu %	Co ppm	Pb %	Zn %	Ag g/t	From m	To m
WFPD185	213168	8031720.7	355	60	13	0	174	0.87	1	24	229	242
					and 15	2.14	1548	0.5	0.28	26	242	257